

Special Voices - Parent/Carer Forum for Slough



Coffee & Mince Pies - Thursday – 12th December 2024

Drop – in anytime between 10am – 1pm

Cippenham Baptist Church Hall. Elmshott Lane.SL1 5QS

Free gift bag & free tombola on entry, always room for **cake!!**

Our guests will be: SENDIASS (Special Educational Needs/Disability, Information, Advice & Support Service

Family Participation Day - Saturday 14th December, 1 – 4pm



For parent/carers children & young people with additional needs & siblings -
Sensory Room will be open

Places need to be booked in advance by contacting us

Stoke Park Trust (PALS) – 225 – 227 Northern Road. SL1 1LU

Free gift for parent/carers/children/young people. Free entry Tombola, Buffet lunch & chocolate for children

Come & fill up our washing line with your views, experiences & ideas to celebrate the new year with us, & of course, CAKE

Thursday 16th January 2025 - Drop – in anytime between 10am – 1pm

Cippenham Baptist Church Hall. Elmshott Lane.SL1 5QS





“Like” or follow us on facebook, Special Voices with this logo for news of all our events

website: specialvoices.co.uk

Email: info@specialvoices.co.uk

Telephone: 07990 693439

X @ specialvoices

Donate:

Localgiving.com - Special Voices



Coffee Days 2024/25:

Drop – in anytime between:

10.00 – 1pm

Thursday 12th December – coffee & mince pies

Thursday 16th January 2025

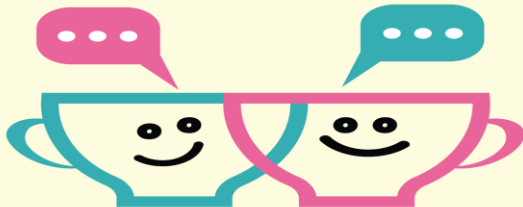
13th February 2025 & 13th March 2025

Cippenham Baptist Church Hall.

11 Elmshott Lane. SL1 5QS

**Mondays, Drop in anytime between: 11 – 1pm
(Except B/H's)**

Classroom 3. Cippenham Baptist Church. 11
Elmshott Lane. SL1 5QS



Special Voices remain committed to collecting your views & experiences of services in Slough that our children/young people/adults with additional needs use. Make your voice heard, anonymously if you wish by completing our surveys, or have your say by contacting us: telephone, email, or face – to – face at one of our events, we are here to listen to your experience/journey, good, or not so good, tell us.



Virtual Evening Coffee Hour via Zoom –

Monday's – 6 - 7pm

9th December

20th January – 24th February

24th March

Free entry draw (donated items) for all attendees where two lucky attendees on the night will be picked to receive a gift

Why not join us to hear how your feedback is used by us to help improve services in Slough, the latest updates on how we are representing you at various meetings & with the DfE

If you would like to join us then please text: “codes” to 07990693439 a day or two before & we will send the codes you need to join in.

Disclaimer: Please note that inclusion of information in this newsletter does not imply endorsement of products, or services by Special Voices. Information was correct at time of print