

## Special Voices - Parent/Carer Forum for Slough



Come & fill up our washing line with your SEND priorities for 2025, views & experiences to celebrate the new year with us, each entry will be entered into a draw for a TV/DVD player (to be drawn @ the end of the month) - Plus guests on the day

**Thursday 16<sup>th</sup> January 2025 - Drop – in anytime between 10am – 1pm**

**Cippenham Baptist Church Hall. Elmshott Lane.SL1 5QS**



### Special Voices Information Day

**Cippenham Baptist Church. Elmshott Lane.SL1 5QS**

**Thursday 27<sup>th</sup> February 2025 – Drop in anytime between 10 – 1.30pm**

Special Voices look forward to welcoming you to another of our information/Local Offer Live days, free gift bag on entry for parent/carers, refreshments, free parking on site & surrounding area, information stands with the providers representing education, health & social care, lots more services, groups & organisations have been invited to provide information for parent/carers families in Slough

### Family Participation Day - Saturday 15<sup>th</sup> March 2025, 1 – 4pm



For parent/carers children & young people with additional needs & siblings –

Sensory Room will be open

Places need to be booked in advance by contacting us



**“Like” or follow us on facebook, Special Voices with this logo for news of all our events**

**website:** [specialvoices.co.uk](http://specialvoices.co.uk)

**Email:** [info@specialvoices.co.uk](mailto:info@specialvoices.co.uk)

**Telephone:** 07990 693439

**X @ specialvoices**

**Donate:**

[Localgiving.com](http://Localgiving.com) - Special Voices



## Coffee Days 2025:

**Drop – in anytime between:**

**10.00 – 1pm**

**Thursday 16<sup>th</sup> January 2025**

**Thursday 13<sup>th</sup> February 2025**

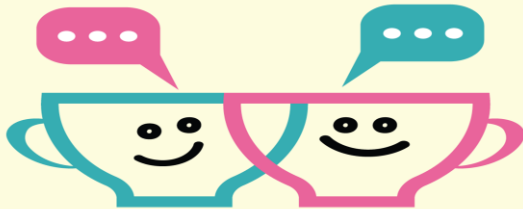
**Thursday 13<sup>th</sup> March 2025**

**Cippenham Baptist Church Hall.**

**11 Elmshott Lane. SL1 5QS**

**Mondays, Drop in anytime between: 11 – 1pm  
(Except B/H's)**

**Classroom 3. Cippenham Baptist Church. 11  
Elmshott Lane. SL1 5QS**



**Special Voices remain committed to collecting your views & experiences of services in Slough that our children/young people/adults with additional needs use. Make your voice heard, anonymously if you wish by completing our surveys, or have your say by contacting us: telephone, email, or face – to – face at one of our events, we are here to listen to your experience/journey, good, or not so good, tell us.**



**Virtual Evening Coffee Hour via Zoom –**

**Monday's – 6 - 7pm**

**20<sup>th</sup> January**

**24<sup>th</sup> February**

**24<sup>th</sup> March**

**Free entry draw (donated items) for all attendees where two lucky attendees on the night will be picked to receive a gift**

**Why not join us to hear how your feedback is used by us to help improve services in Slough, the latest updates on how we are representing you at various meetings & with the DfE**

**If you would like to join us then please text: “codes” to 07990693439 a day or two before & we will send the codes you need to join in.**

**Disclaimer: Please note that inclusion of information in this newsletter does not imply endorsement of products, or services by Special Voices. Information was correct at time of print**